

# REJNSTRUP

[www.regr.dk](http://www.regr.dk)



UDLEJNING & SALG



[www.regr.dk](http://www.regr.dk)

KASSEN TIL ENTREPRENØREN

## ► Trench Shoring Systems - Overview

### PLACE AND ADJUST METHOD

### LOWER AND CUT METHOD

**Type 100**  
Light Weight Shoring  
Page 6 - 7

**Type 300**  
Light Box Shoring  
Page 8 - 9

**Type 600**  
Standard Box Shoring  
Page 10 - 11

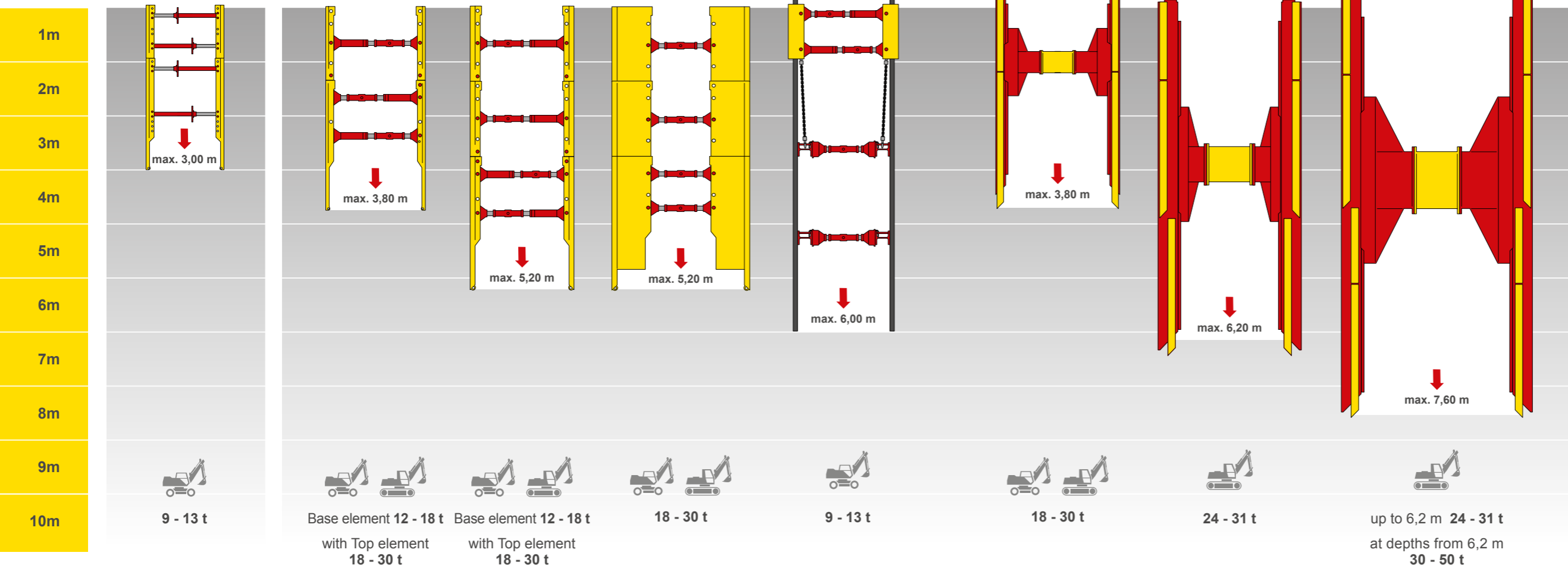
**Type 600**  
Manhole Box Shoring  
Page 12 - 13

**Type 400**  
Pile Chamber  
Page 14 - 15

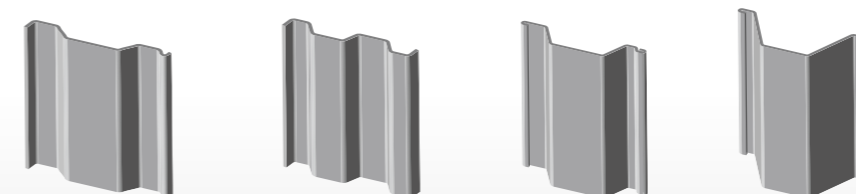
**Single Slide Rail Shoring**  
Page 16 - 17

**Double Slide Rail Shoring Standard**  
Page 18 - 19

**Double Slide Rail Shoring XL**  
Page 20 - 21



### ROLLED STEEL SECTIONS



### FURTHER CONTENT



**Shaft and Manhole Shoring** 22-23  
Adjustable clamping device

**Slide Rail Plates** 24  
Technical parameters



**Aluminium Light Weight Shoring** 25  
ISCHEBECK Gigant  
Aluminium trench sheet

**Trench Struts** 26  
ISCHEBECK  
Gigant / Titan / Terra



**Trench Shoring Profiles** 27  
Trench sheets, Sheet Piles



**Safety systems** 28 - 29  
Fall Protection Equipment



**Mobile Road System** 30 - 33  
ground protection tiles

**Supporting Equipment** 34  
Pipe grabs  
Hydraulic pipe pullers

**Certificates** 35  
Proven Quality



## ► Trench Shoring Systems - Production

Vi forsyner de danske entreprenører med gravekasser og andet entreprenørmateriel fra vores tyske leverandør, TWF i Heinsberg.

Vi tilbyder dag-til-dag levering på de mest gængse gravekasser.

Vi har over 35 års erfaring fra branchen og vi kender derfor vores kunders behov og de problemer der kan være på byggepladsen.

Vi har alt fra letvægts-gravekasser til slide rail systemer ned til 9 m, samt spuns-/ og alu-systemer.

Vi leverer over hele skandinavien.

Ring hvis du mangler kassen - telefon: 71 96 92 30



## ► Heinsberg - Germany



The **experience** of our motivated employees and the use of **high performance welding machines** ensure the excellent quality of production.



Our steel trench shoring are designed and built according to **latest international standards and safety regulations**. We know about the tough reality at site and therefore we reinforced our equipment where needed to extend the lifetime and reduce maintenance cost.



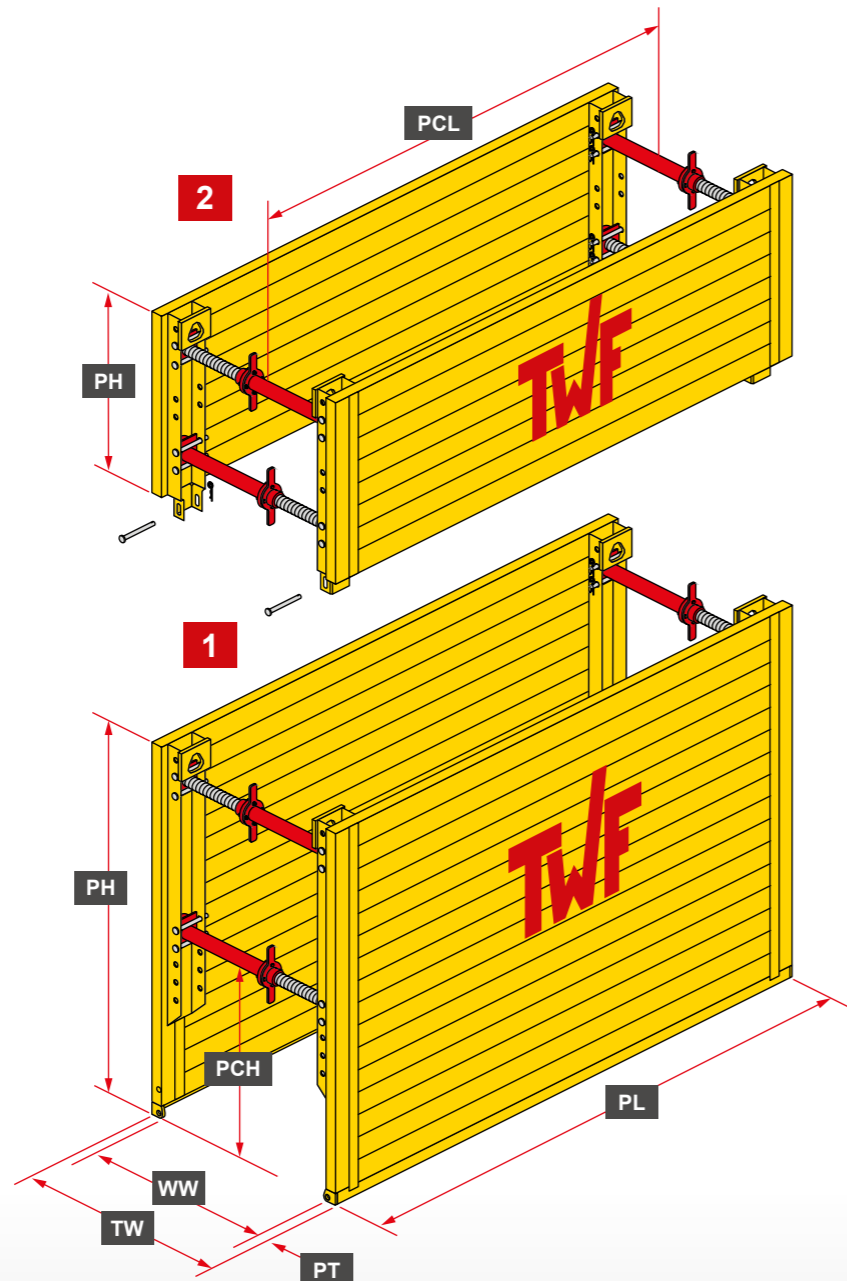


## ► Trench Shoring Systems

## ► Light Weight Shoring Type 100

### Light Weight Shoring Type 100

- For **small to medium-sized construction projects** (utility lines, house connections etc.)
- Installation with **place and adjust method** in stable soils
- Mobile excavator: **9 - 13 t**
- Maximum trench depth: **3,00 m**
- Trench width: **0,66 - 2,23 m**
- Pipe clearance height: **0,94 m**



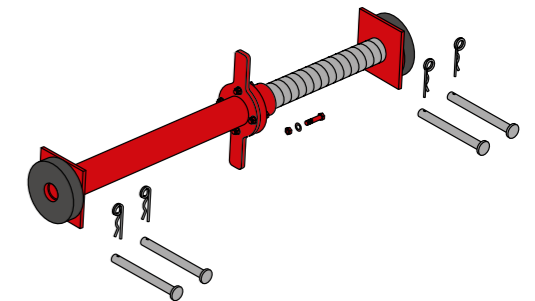
1	Base element
2	Top element
PH	Plate height
TW	Trench width
WW	Working width
PT	Plate thickness
PCH	Pipe clearance height
PL	Plate length
PCL	Pipe clearance length

Element	Plate length PL (m)	Plate height PH (m)	Plate thickness PT (mm)	PC-length PCL (m)	PC-height PCH (m)	Char. System resistance R <sub>s</sub> (kN/m <sup>2</sup> )	Weight c/w strut B (kg/box)
1	2,00	1,60 / 2,00 / 2,40 / 2,60	60	1,60	0,94*	47,8	570 / 674 / 766 / 812
2		0,60 / 1,00					310 / 470
1	2,50	1,60 / 2,00 / 2,40 / 2,60	60	2,10	0,94*	38,3	634 / 774 / 914 / 984
2		0,60 / 1,00					370 / 568
1	3,00	1,60 / 2,00 / 2,40 / 2,60	60	2,60	0,94*	31,9	736 / 904 / 1068 / 1150
2		0,60 / 1,00					430 / 536
1	3,50	1,60 / 2,00 / 2,40 / 2,60	60	3,10	0,94*	27,3	830 / 1040 / 1200 / 1280
2		0,60 / 1,00					490 / 592

\* PH: 1,60 m / 2,00 m

### Light Weight Spindle

Type	Working width WW (m)		Trench width TW (m)		Safe working load (kN)	Weight complete (kg)
	min.	max.	min.	max.		
A	0,53	0,73	0,66	0,86	160	13,2
B	0,71	1,07	0,84	1,20	147	16,0
C	1,05	1,65	1,18	1,78	124	19,5
D	1,50	2,10	1,63	2,23	107	22,5



### Telescopic Strut

Type	Working width WW (m)		Trench width TW (m)		Safe working load (kN)	Weight complete (kg)
	min.	max.	min.	max.		
0	0,57	0,77	0,70	0,90	169	9,5
1	0,82	1,29	0,95	1,42	159	15,0
2	1,34	1,80	1,47	1,93	149	20,5
3	1,85	2,32	1,98	2,45	132	26,0
4	2,37	2,83	2,50	2,96	103	31,5

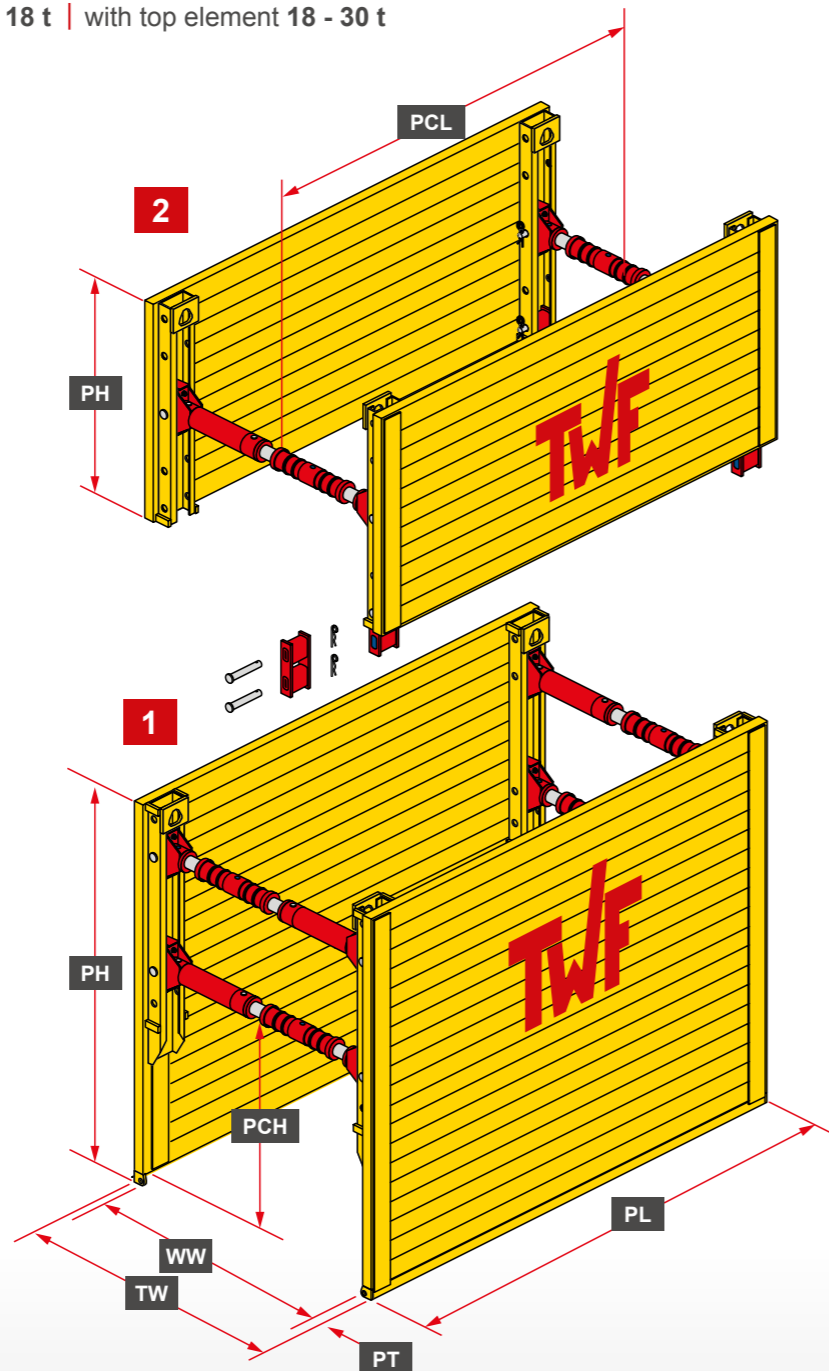


► **Telescopic Strut**  
optional for Type 100  
for working widths  
from 570 mm to 2830 mm

## ► Trench Shoring Systems

### Light Box Shoring Type 300

- For **medium trench shoring** with light construction machinery
- Installation by **lower and cut method** in unstable soils
- Mobile- or crawler excavator: **12 - 18 t** | with top element **18 - 30 t**
- Maximum trench depth: **3,80 m**
- Trench width: **1,11 - 4,40 m**
- Pipe clearance height: **1,27 m**



1	Base element
2	Top element
PH	Plate height
TW	Trench width
WW	Working width
PT	Plate thickness
PCH	Pipe clearance height
PL	Plate length
PCL	Pipe clearance length

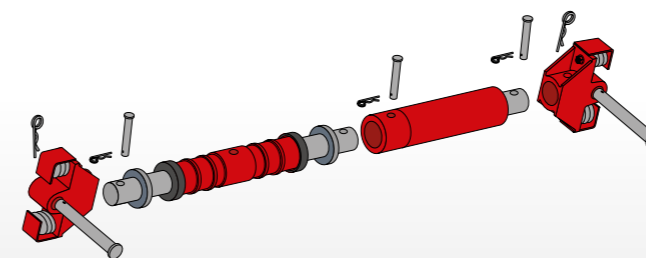
## ► Light Box Shoring Type 300

Element	Plate length PL (m)	Plate height PH (m)	Plate thickness PT (mm)	PC-length PCL (m)	PC-height PCH (m)	Char. System resistance $R_x$ (kN/m <sup>2</sup> )	Weight c/w spindle (kg/box)
1	2,00	2,00 / 2,40 / 2,60	60	1,60	1,14 / 1,28 / 1,28	68,1 / 49,3 *	1051 / 1205 / 1281
2		1,40				68,05	665
1	2,50	2,00 / 2,40 / 2,60	60	2,10	1,14 / 1,28 / 1,28	55,4 / 39,4 *	1245 / 1431 / 1523
2		1,40				55,4	797
1	3,00	2,00 / 2,40 / 2,60	60	2,60	1,14 / 1,28 / 1,28	45,4 / 32,9 *	1437 / 1661 / 1773
2		1,40				45,4	929
1	3,50	2,00 / 2,40 / 2,60	60	3,10	1,14 / 1,28 / 1,28	34,3 / 28,2 *	1539 / 1779 / 1899
2		1,40				34,3	1061
1	4,00	2,00 / 2,40	60	3,10	1,14 / 1,28 / 1,28	25,0	1719 / 2007
2		1,40				25,0	1061

\* The Char. System resistance is based on the indicated PC-height.

### Standard Spindle

Number intermediate pipe	Working width WW (m)	Trench width TW (m)	Safe working load (kN)	Weight complete (kg)
0	0,98 - 1,27	1,11 - 1,40	468	65
1	1,48 - 1,77	1,61 - 1,90	403	86
2	1,98 - 2,27	2,11 - 2,40	348	107
3	2,48 - 2,77	2,61 - 2,90	299	128
4	2,98 - 3,27	3,11 - 3,40	254	149
5	3,48 - 3,77	3,61 - 3,90	210	170
6	3,98 - 4,27	4,11 - 4,40	165	191

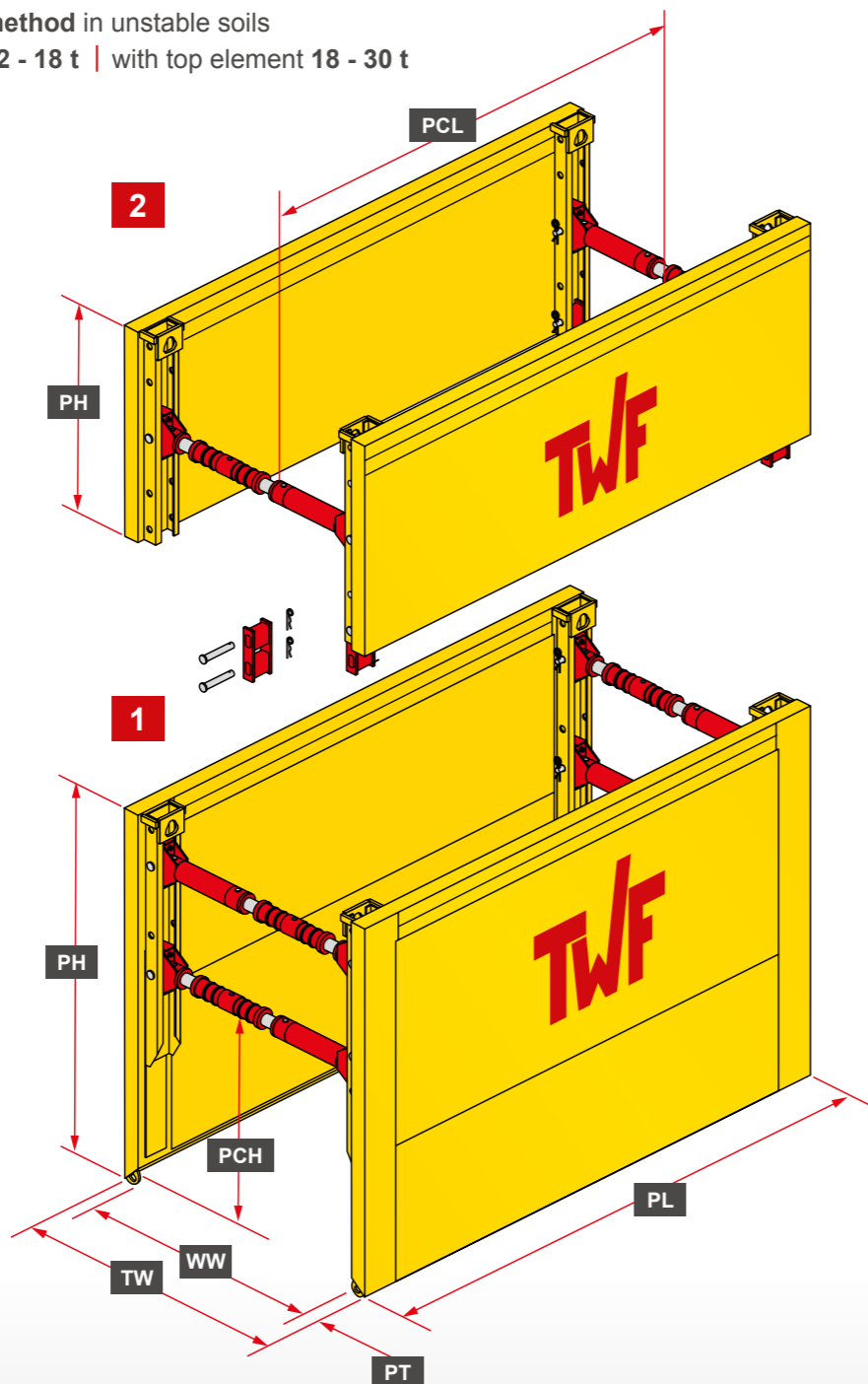




## ► Trench Shoring Systems

### Standard Box Shoring Type 600

- **Solid and hard wearing** - it ensures maximum safety at trench depths up to 5,20 m
- Installation by **lower and cut method** in unstable soils
- Mobile- or crawler excavator: **12 - 18 t** | with top element **18 - 30 t**
- Maximum trench depth: **5,20 m**
- Trench width: **1,20 - 4,49 m**
- Pipe clearance height: **1,50 m**



1	Base element
2	Top element
PH	Plate height
TW	Trench width
WW	Working width
PT	Plate thickness
PCH	Pipe clearance height
PL	Plate length
PCL	Pipe clearance length

## ► Standard Box Shoring Type 600

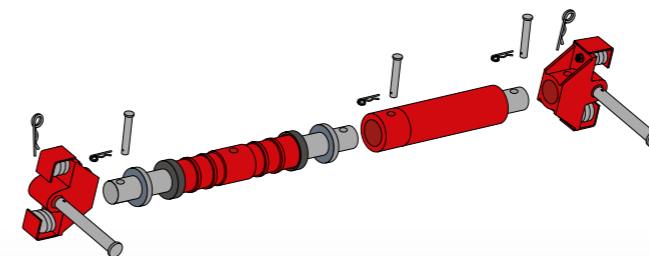
Element	Plate length PL (m)	Plate height PH (m)	Plate thickness PT (mm)	PC-length PCL (m)	PC-height PCH (m)	Char. System resistance R <sub>s</sub> (kN/m <sup>2</sup> )	Weight c/w spindle (kg/box)
1	3,00	2,40 / 2,60	107	2,60	1,30 / 1,50	65,7 / 76,3 *	2007 / 2151
2		1,40					1121
1	3,50	2,40 / 2,60	107	3,10	1,30 / 1,50	56,3 / 65,4 *	2289 / 2463
2		1,40					1289
1	4,00	2,40 / 2,60	107	3,60	1,30 / 1,50	49,3 / 57,2 *	2549 / 2733
2		1,40					1509

\* The char. system resistance is based on the indicated PC-height.

► Other lengths on request!

### Standard Spindle

Number intermediate pipe	Working width WW (m)	Trench width TW (m)	Safe working load (kN)	Weight complete (kg)
0	0,98 - 1,27	1,20 - 1,49	468	65
1	1,48 - 1,77	1,70 - 1,99	403	86
2	1,98 - 2,27	2,20 - 2,49	348	107
3	2,48 - 2,77	2,70 - 2,99	299	128
4	2,98 - 3,27	3,20 - 3,49	254	149
5	3,48 - 3,77	3,70 - 3,99	210	170
6	3,98 - 4,27	4,20 - 4,49	165	191



### ► Transformation Profile - special solution





**REJNSTRUP**  
GRAVEKASSER  
ENTREPRENØRMATERIEL  
[www.regr.dk](http://www.regr.dk)

## Transformationsprofil

### Fra Rejnstrup

Øger rør diameteren fra  $\varnothing$  1500 til  $\varnothing$  2300

Dette system benyttes, hvor den traditionelle gravekasse må give op.

Med profilerne på gravekasserne hæver man den nederste spindel, hvilket gør man kan få plads til et rør med udvendig diameter på  $\varnothing$  2300.

Man kan benytte profilerne op til 5,20 meters dybde.

Profilerne vejer 500 kg stykket.



*Rejnstrup - vi har kassen*

**RING**  
Tlf: 71 96 92 30  
for mere information.  
[www.regr.dk](http://www.regr.dk)

Fra  
 $\varnothing$  1500  
op til  
 $\varnothing$  2300

Hæver man den nederste spindel, kan man få plads til et rør med udvendig diameter på  $\varnothing$  2300

**RING NU**

og få et godt tilbud.

Tlf: 71 96 92 30

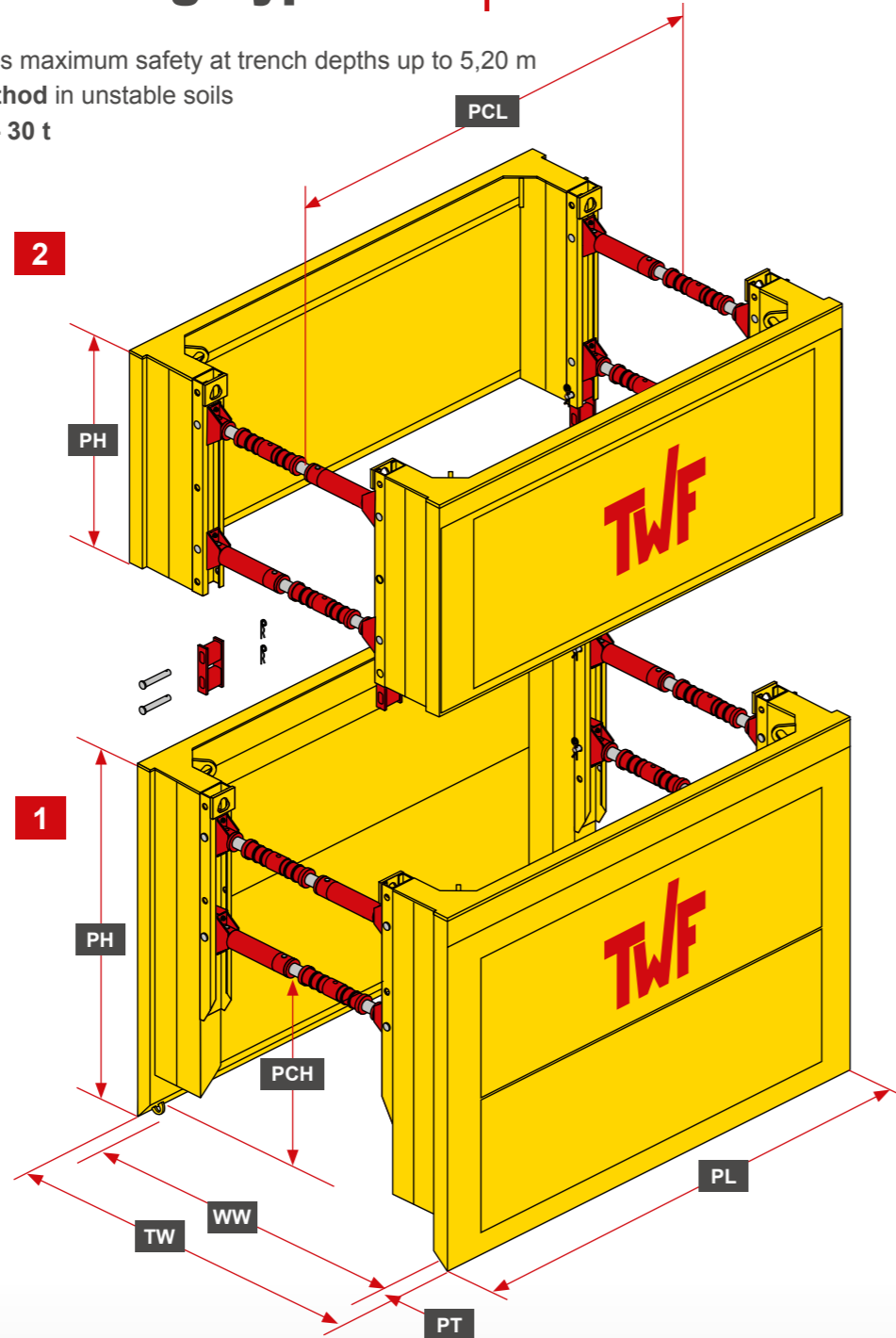


## ► Trench Shoring Systems

## ► Manhole Box Shoring Type 600

### Manhole Box Shoring Type 600

- **Solid and hard wearing** - ensures maximum safety at trench depths up to 5,20 m
- Installation by **lower and cut method** in unstable soils
- Mobile- or crawler excavator: **18 - 30 t**
- Maximum trench depth: **5,20 m**
- Trench width: **2,00 - 5,29 m**
- Pipe clearance height: **1,50 m**



1	Base element
2	Top element
PH	Plate height
TW	Trench width
WW	Working width
PT	Plate thickness
PCH	Pipe clearance height
PL	Plate length
PCL	Pipe clearance length

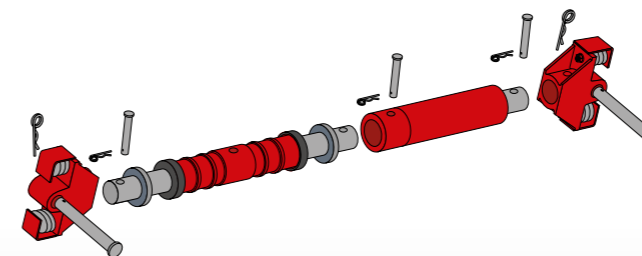
Element	Plate length PL (m)	Plate height PH (m)	Plate thickness PT (mm)	PC-length PCL (m)	PC-height PCH (m)	Char. System resistance R <sub>s</sub> (kN/m <sup>2</sup> )*	Weight c/w spindle (kg/box)
1	3,00	2,40	107	2,60	1,30 / 1,50	65,7 / 76,3 *	2623
2		1,40					1599
1	3,50	2,40	107	3,40	1,30 / 1,50	56,3 / 65,3 *	2968
2		1,40					1706
1	4,00	2,40	107	3,60	1,30 / 1,50	49,2 / 57,2 *	3221
2		1,40					1853

\* The char. system resistance is based on the indicated PC-height.

► Other lengths on request!

### Standard Spindle

Number intermediate pipe	Working width WW (m)	Trench width TW (m)	Safe working load (kN)	Weight complete (kg)
0	1,78 - 2,07	2,00 - 2,29	468	65
1	2,28 - 2,57	2,50 - 2,79	403	86
2	2,78 - 3,07	3,00 - 3,29	348	107
3	3,28 - 3,57	3,50 - 3,79	299	128
4	3,78 - 4,07	4,00 - 4,29	254	149
5	4,28 - 4,57	4,50 - 4,79	210	170
6	4,78 - 5,07	5,00 - 5,29	165	191

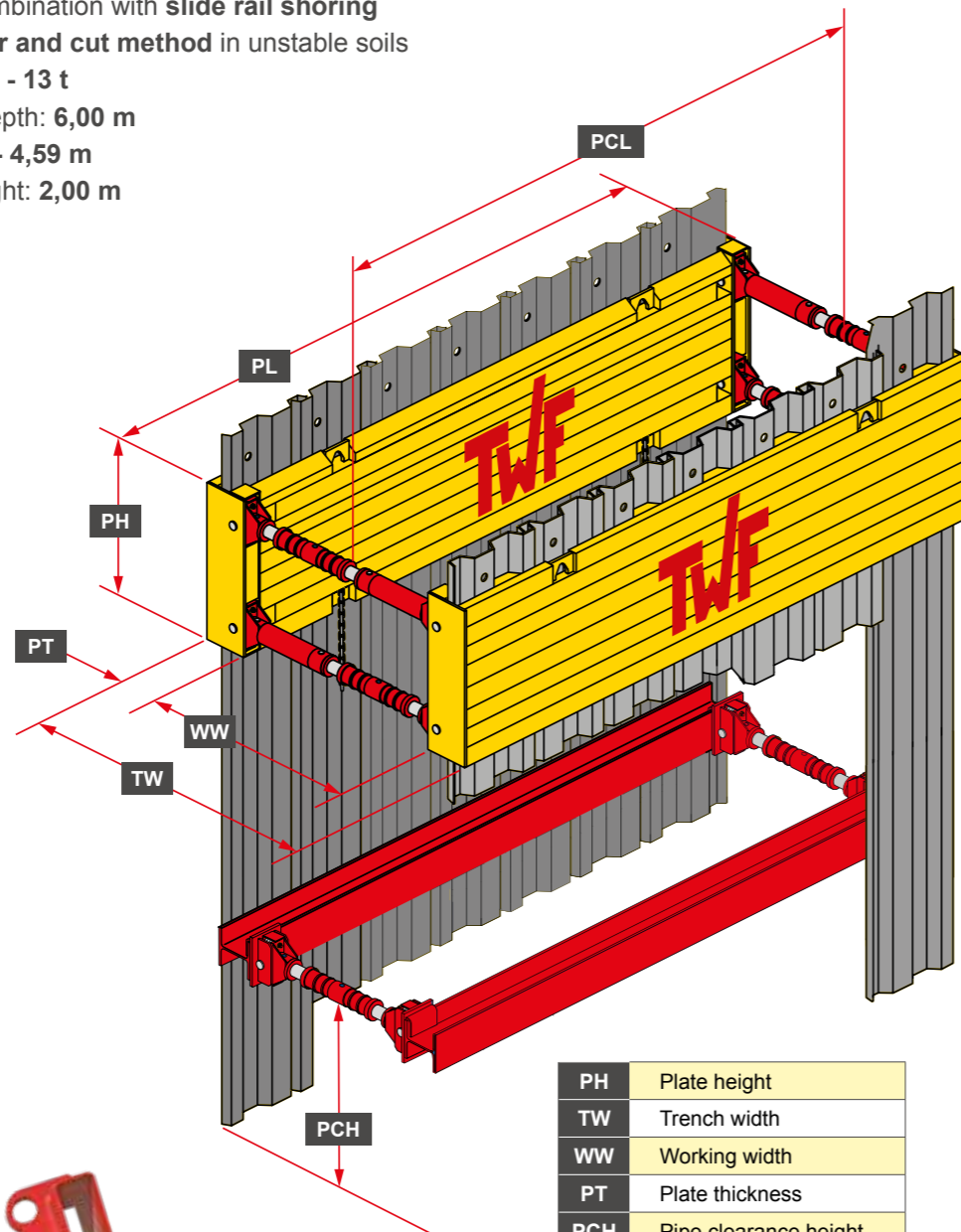




## ► Trench Shoring Systems

### | Pile Chamber Type 400 |

- Combined System (plates and trench sheets) applicable where supply lines are crossing. Also possible in combination with slide rail shoring
- Installation by lower and cut method in unstable soils
- Mobile excavator: 9 - 13 t
- Maximum trench depth: 6,00 m
- Trench width: 1,30 - 4,59 m
- Pipe clearance height: 2,00 m



PH	Plate height
TW	Trench width
WW	Working width
PT	Plate thickness
PCH	Pipe clearance height
PL	Plate length
PCL	Pipe clearance length

► End hooks for steel walings - special solution



## ► Pile Chamber Type 400

Plate-length PL (m)	Plate height with guide PH (m)	PC-length PCL (m)	Quantity Trench sheets (n / plate)	Permissible beam load (kN/m)	Weight Plate (kg)	Weight Box (kg)
---------------------	--------------------------------	-------------------	------------------------------------	------------------------------	-------------------	-----------------

#### ► PC Type 100 with light weight spindle „B“ + Trench sheets KD 4

2,10	0,60	1,70	5	45,70	274	612
2,50	0,60	2,10	6	30,56	318	700
2,90	0,60	2,50	7	21,86	363	790

#### ► PC Typ 400 with standard spindle + Trench sheets KD 6\*

2,80	1,00	2,50	5	132,80	613	1309
3,40	1,00	3,00	6	90,04	689	1461
3,90	1,00	3,50	7	67,82	849	1781

#### ► PC Typ 400 for slide rails + Trench sheets KD 6

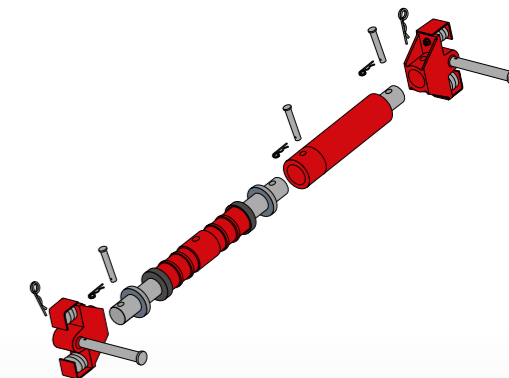
2,00	1,00	1,80	3	n.B	487	-
2,50	1,00	2,30	4	169,54	582	-
3,00	1,00	2,80	5	116,02	677	-
3,50	1,00	3,30	6	80,52	778	-
4,00	1,00	3,80	7	61,53	873	-
5,00	1,00	4,80	9	69,52	1250	-

\* Design with KD 4 on request.

► Special lengths and inner plates 170 mm are available on request!

### | Standard Spindle |

Number intermediate pipe	Working width WW (m)		Trench width TW (m)	Safe working load (kN)	Weight complete (kg)
	Trench sheets	Inner plates			
0	1,00 - 1,29	0,76 - 1,05	1,30 - 1,59	468	65
1	1,50 - 1,79	1,26 - 1,55	1,80 - 2,09	403	86
2	2,00 - 2,29	1,76 - 2,05	2,30 - 2,59	348	107
3	2,50 - 2,79	2,26 - 2,55	2,80 - 3,09	299	128
4	3,00 - 3,29	2,76 - 3,05	3,30 - 3,59	254	149
5	3,50 - 3,79	3,26 - 3,55	3,80 - 4,09	210	170
6	4,00 - 4,29	3,76 - 4,05	4,30 - 4,59	165	191

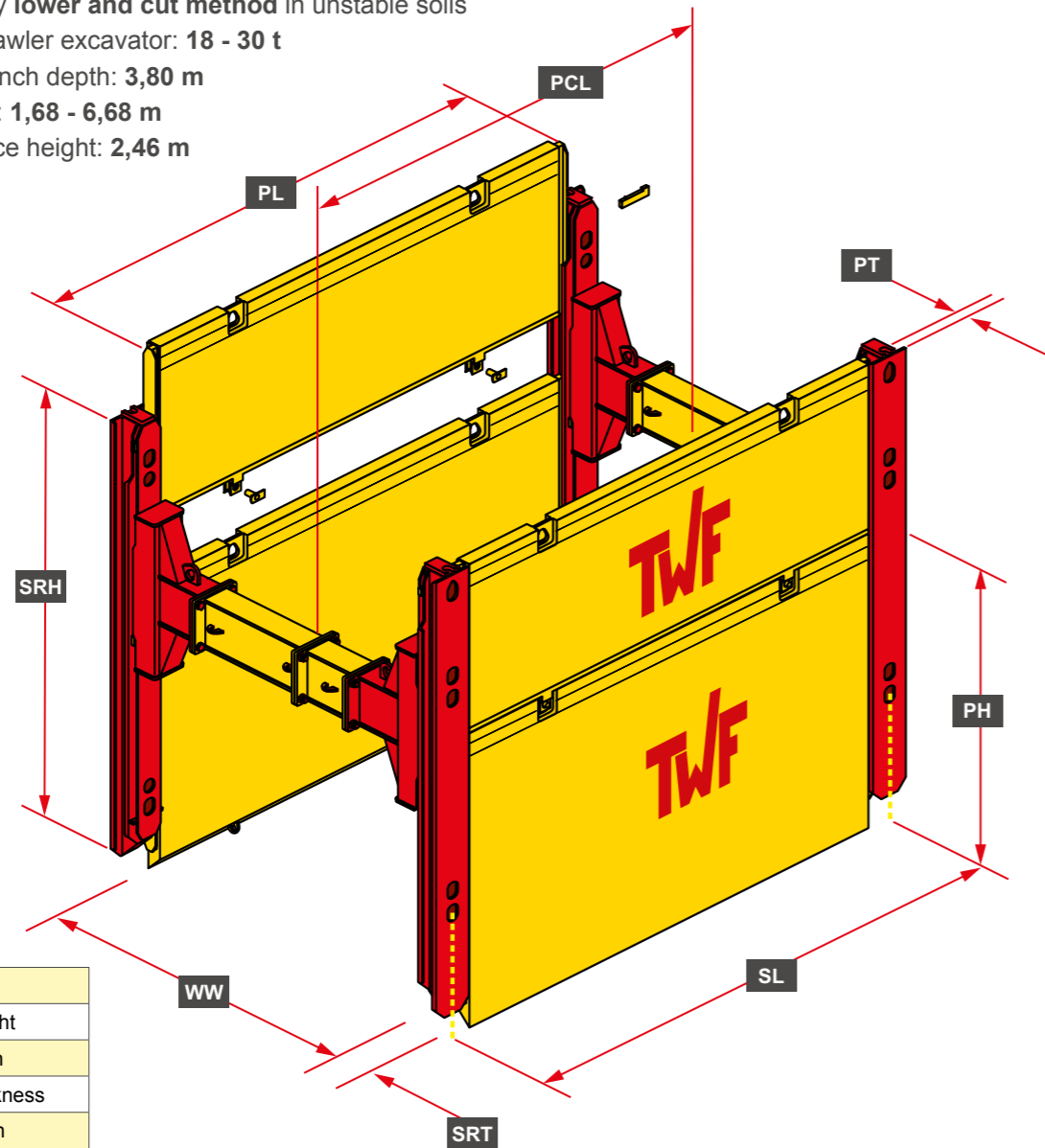


## ► Trench Shoring Systems

## ► Single Slide Rail Shoring

### Single Slide Rail Shoring

- Usage at **high pipe clearances** - slide rail plates in **one guide rail** - rolling struts are movable - it ensures the best possible use of the **working area**
- Installation by **lower and cut method** in unstable soils
- Mobile- or crawler excavator: **18 - 30 t**
- Maximum trench depth: **3,80 m**
- Trench width: **1,68 - 6,68 m**
- Pipe clearance height: **2,46 m**



PL	Plate length
SRH	Slide rail height
WW	Working width
SRT	Slide rail thickness
SL	System length
PH	Plate height
PT	Plate thickness
PCL	Pipe clearance length

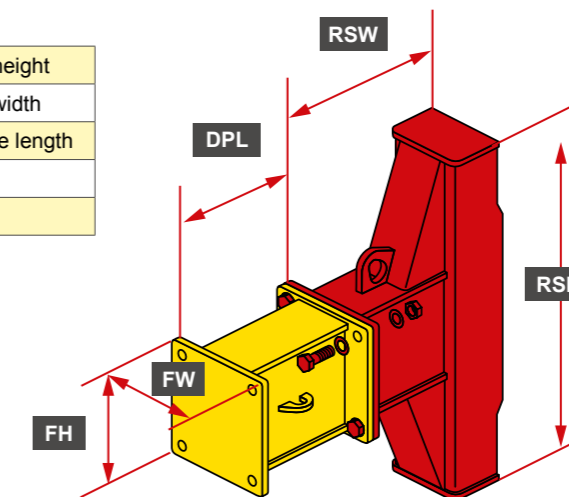
► For further information about slide rail plates see [page 24](#)

Element	Slide rail height SRH (m)	Weight (kg)	Slide rail thickness SRT (mm)	Char. System resistance
Slide rail	3,50	540	220	460,0 kNm
Corner rail		350	275	130,9* kN/m

\* Slide rail force each side

### Rolling Strut

RSW	Rolling Strut width
DPL	Distance piece length
FH	Flange height
FW	Flange width



Rolling Strut	
Height RSH (m)	1,24
Width RSW (m)	0,62
Flange width FW (mm)	405
Flange height FH (mm)	420
Weight / RS-pair (kg)	620
min. Working width WW (m)	1,24

Distance piece						
Lenght DPL (m)	0,25	0,50	0,75	1,00	2,00	3,00
Weight (kg)	99	128	157	185	303	421



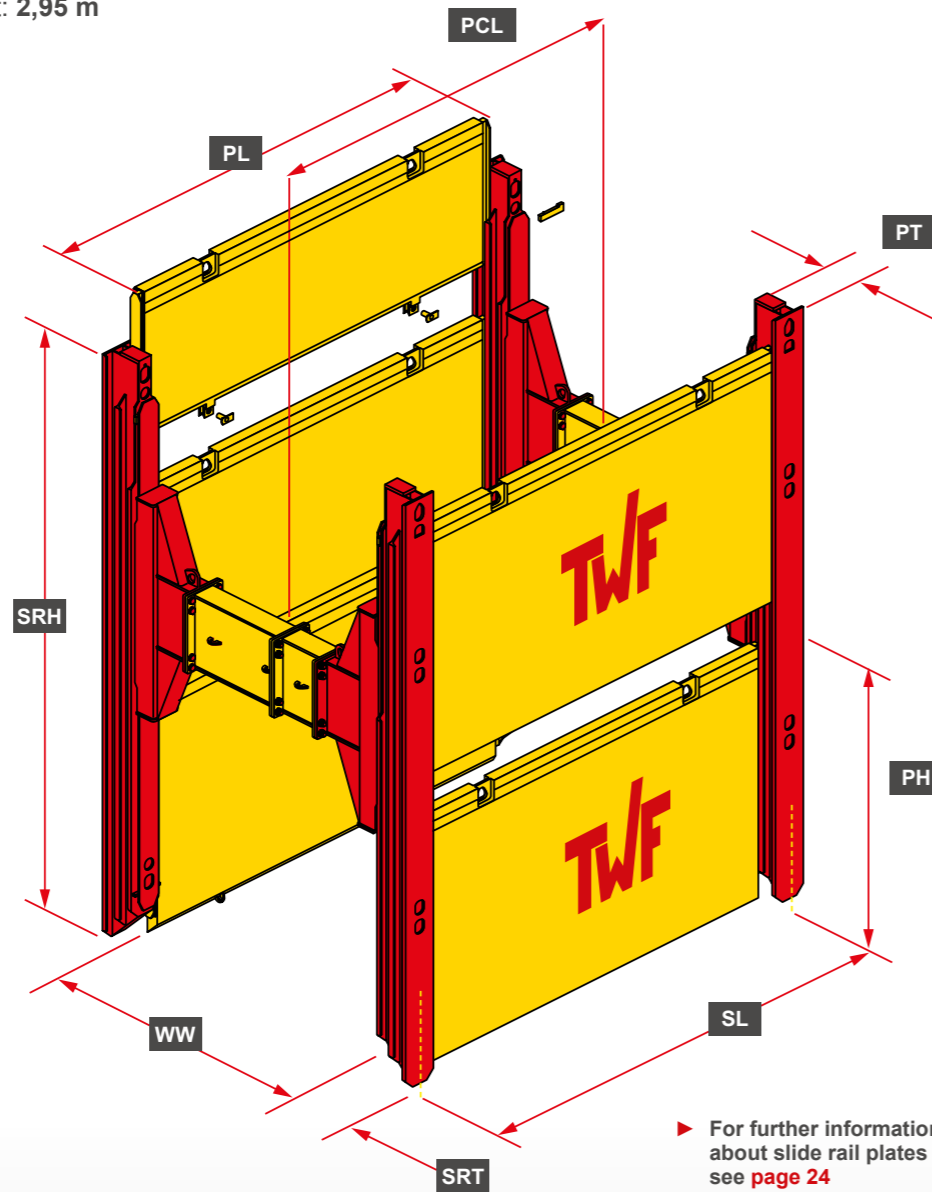


## ► Trench Shoring Systems

## ► Double Slide Rail Shoring

### Double Slide Rail Shoring **Standard**

- Slide rail plates in **two guide rails** - for flexible use in several fields
- Installation by **lower and cut method** in unstable soils - easy dismantling
- Crawler excavator: **24 - 31 t**
- Maximum trench depth: **6,20 m**
- Trench width: **1,99 - 8,99 m**
- Pipe clearance height: **2,95 m**



PL	Plate length
SRH	Slide rail height
WW	Working width
SRT	Slide rail thickness
SL	System length
PH	Plate height
PT	Plate thickness
PCL	Pipe clearance length

► For further information about slide rail plates see [page 24](#)

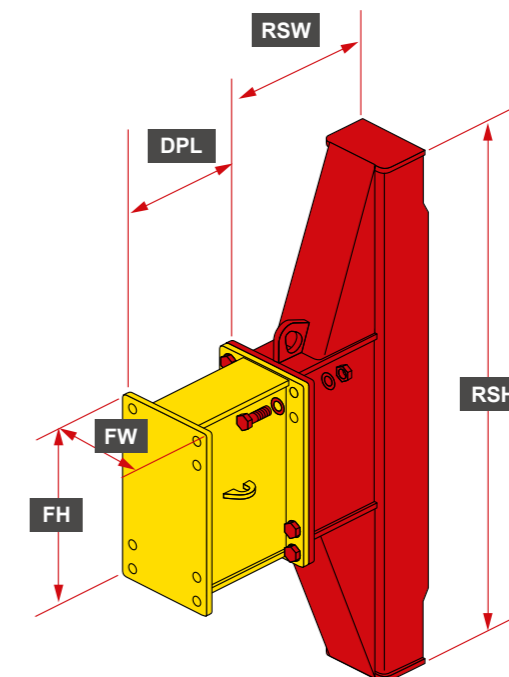
Element	Slide rail height SRH (m)	Weight (kg)	Slide rail thickness SRT (mm)	Char. System resistance
Slide rail	4,50	960	375	949,2 kNm
	5,50	1176		
	6,00	1266		
	6,50	1383		
Corner rail	4,50	810	430	130,9* kN/m
	5,50	957		

\* Slide rail force each side



### Rolling Strut **Standard**

RSH	Rolling Strut height
RSW	Rolling Strut width
DPL	Distance piece length
FH	Flange height
FW	Flange width



Rolling Strut - Standard	
Height RSH (m)	2,04
Width RSW (m)	0,50*
	0,62
Flange width FW (mm)	405
Flange height FH (mm)	720
Weight / RS-pair (kg)	980
min. Working width WW (m)	1,24

\*Special width on request

Distance piece - Standard						
Lenght DPL (m)	0,25	0,50	0,75	1,00	2,00	3,00
Weight (kg)	163	202	245	277	437	597

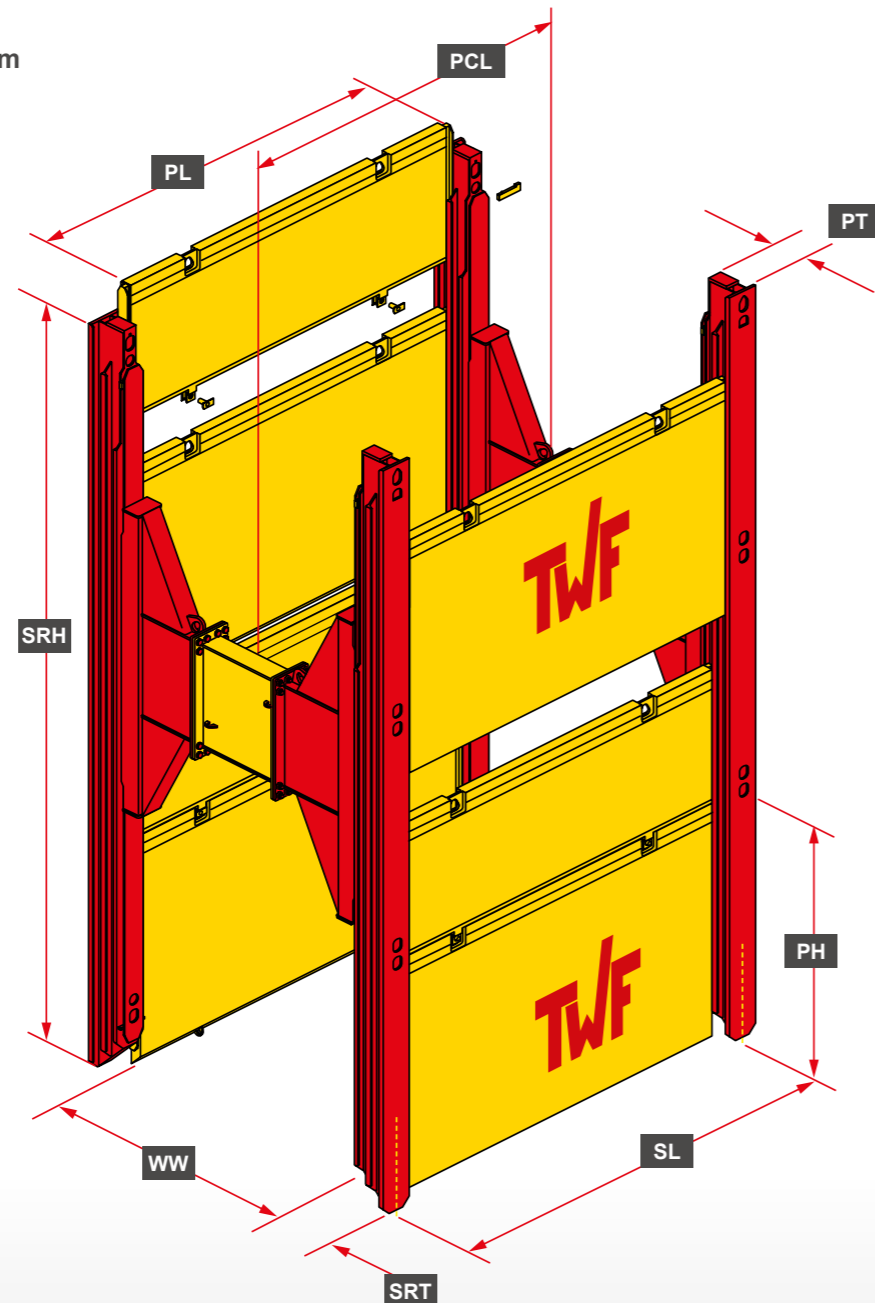


## ► Trench Shoring Systems

## ► Double Slide Rail Shoring

### Double Slide Rail Shoring XL

- Slide rail plates in **two guide rails** - for flexible use in several fields
- Installation by **lower and cut method** in unstable soils - **easy dismantling**
- Crawler excavator at depths up to 6,2 m: **24 - 31 t** | at depths from 6,2 m: **30 - 50 t**
- Maximum trench depth: **7,60 m**
- Trench width: **2,64 - 9,64 m**
- Pipe clearance height: **3,95 m**



PL	Plate length
SRH	Slide rail height
WW	Working width
SRT	Slide rail thickness
SL	System length
PH	Plate height
PT	Plate thickness
PCL	Pipe clearance length

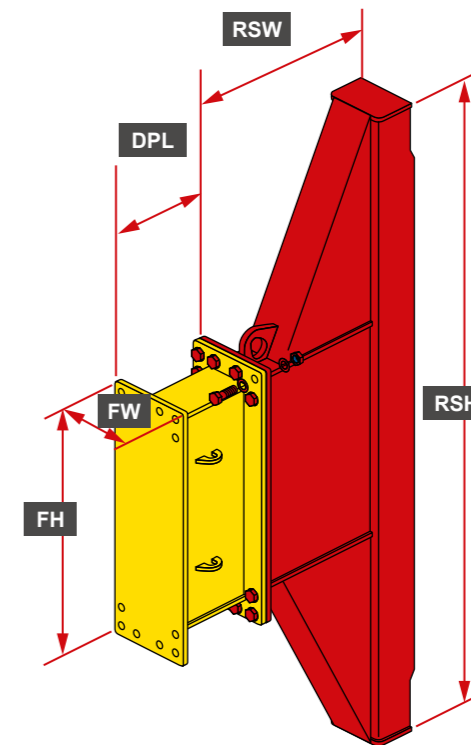
► For further information about slide rail plates see [page 24](#)

Element	Slide rail height SRH (m)	Weight (kg)	Slide rail thickness SRT (mm)	Char. System resistance
Slide rail	6,50	1418	405	949,2 kNm
	7,50	1636		
Corner rail	6,50	1188	430	130,9* kN/m
	7,50	1338		

\* Slide rail force each side

### Rolling Strut XL

RSH	Rolling Strut height
RSW	Rolling Strut width
DPL	Distance piece length
FH	Flange height
FW	Flange width



Rolling Strut - XL	
Height RSH (m)	3,04
Width RSW (m)	0,92
Flange width FW (mm)	405
Flange height FH (mm)	1220
Weight / RS-pair (kg)	1700
min. Working width WW (m)	1,83

Distance piece - XL						
Lenght DPL (m)	0,25	0,50	0,75	1,00	2,00	3,00
Weight (kg)	306	363	418	475	714	960





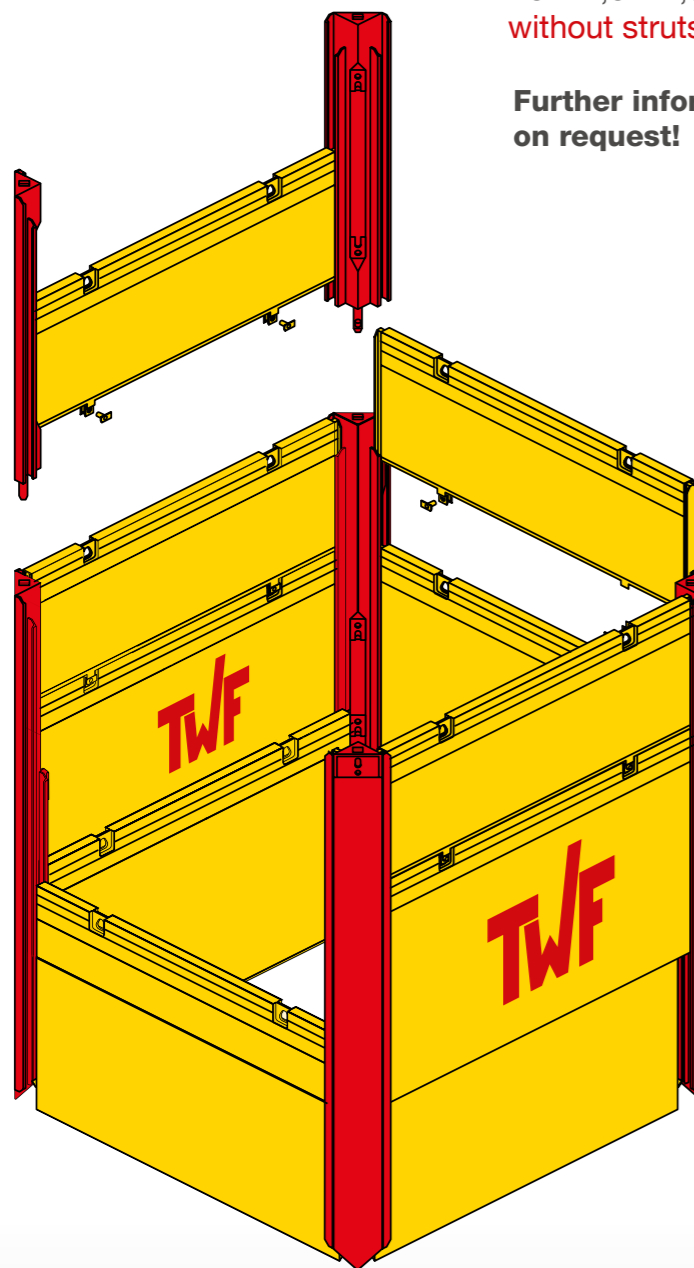
► Trench Shoring Systems

► Shaft and Manhole Shoring

## Shaft and Manhole Shoring

- Working width  
from 2,0 x 2,0 m up to 7,0 x 7,0 m  
without struts.

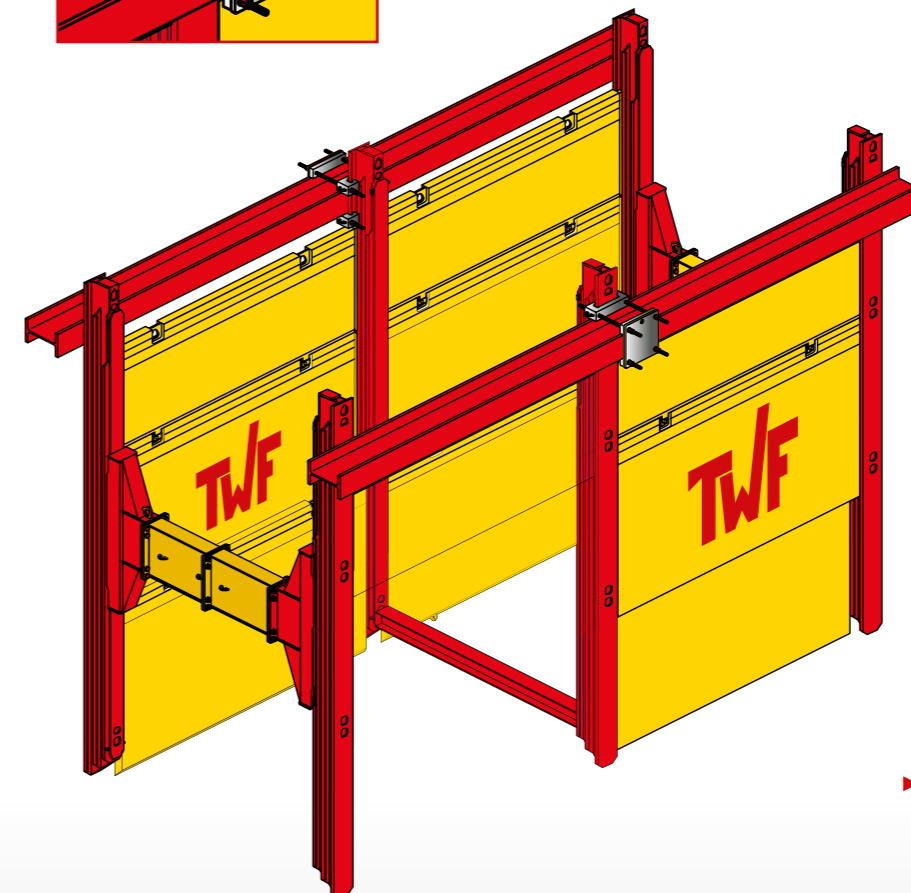
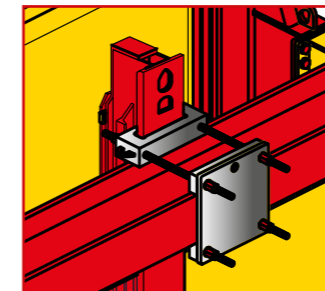
Further information  
on request!



- Adjustable clamping device

Large excavations require the use of an **adjustable clamping device** so that they can be built without struts.

Further information on request!

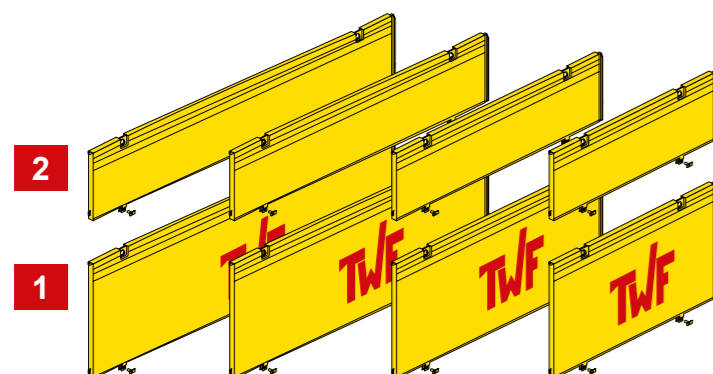


► For further information  
about slide rail plates  
see page 24



## ► Trench Shoring Systems

### Slide Rail Plates



1	Base Plate
2	Top Plate
PL	Plate length
PH	Plate height
PT	Plate thickness
PCL	Pipe clearance length
SL	System length

	Plate length PL (m)	Plate height PH (m)	Plate thickness PT (mm)	PC-length PCL (m)	System length (m)	Char. System resistance $R_x$ (kN/m <sup>2</sup> )	Weight (kg)
1	2,00	2,40	107	1,80	2,27	220,2	552
2		1,40					347
1	2,50	2,40	107	2,30	2,77	141,2	660
2		1,40					434
1	3,00	2,40	107	2,80	3,27	97,9	828
2		1,40					521
1	3,50	2,40	107	3,30	3,77	72,0	966
2		1,40					608
1	4,00	2,40	107	3,80	4,27	55,1	1105
2		1,40					694
1	4,50	2,40	130	4,30	4,77	78,5	1609
2		1,40					1115
1	5,00	2,40	130	4,80	5,27	63,6	1788
2		1,40					1239
1	5,50	2,40	130	5,30	5,77	52,6	1967
2		1,40					1363
1	6,00	2,40	130	5,80	6,27	44,1	2150
2		1,40					1490
1	6,50	2,40	150	6,30	6,77	45,0	2650
2		1,40					1810
1	7,00	2,40	150	6,80	7,27	38,8	2850
2		1,40					1950

► Plates for HEAVY DUTY on request

## ► Aluminium letvægts-spuns



### ALU-SPUNS Gravekasse

Krydsfinerplader som spuns er besværligt, tidskrævende og for dyrt.

Benyt istedet en alu-spuns gravekasse for at sikre din udgravning på en let og sikker måde.

- Kassen samles på under 10 minutter.
- Kassen kan håndteres af 1 mand.
- Kassen vejer ca. 400 kg.
- Pladetryk: 25 kN/m<sup>2</sup>

Kassen er utrolig fleksibel ved svære graveopgaver, hvor der er rør og stikledninger på kryds og tværs.



**RING**  
Tlf: 71 96 92 30  
for mere information.  
www.regr.dk



## ► Trench Struts

## ► Trench Shoring Profiles

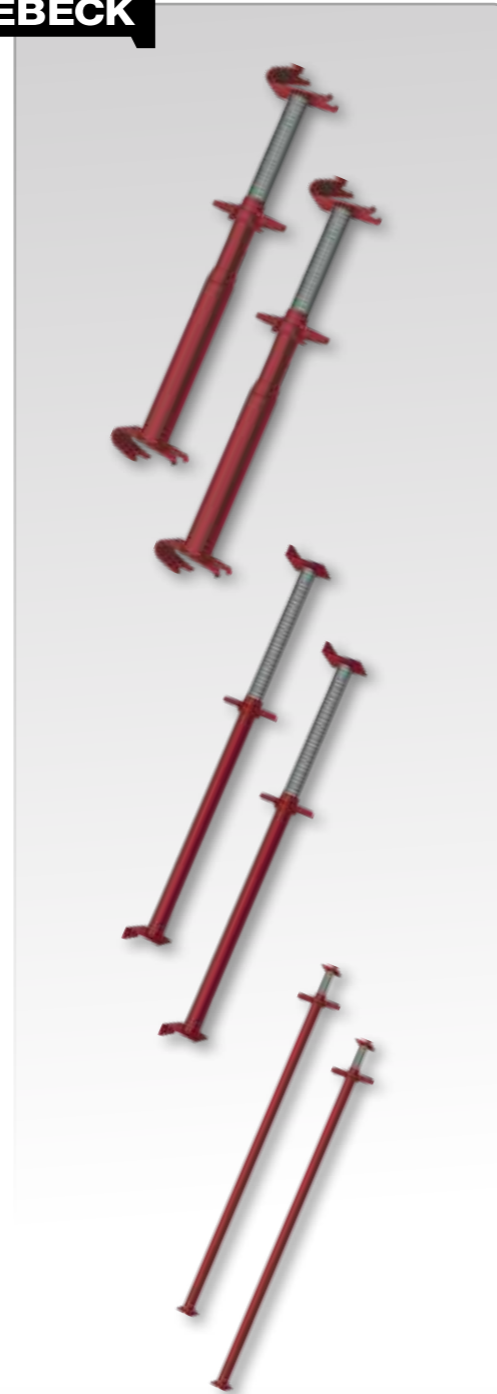
### Trench Struts

ISCHEBECK®

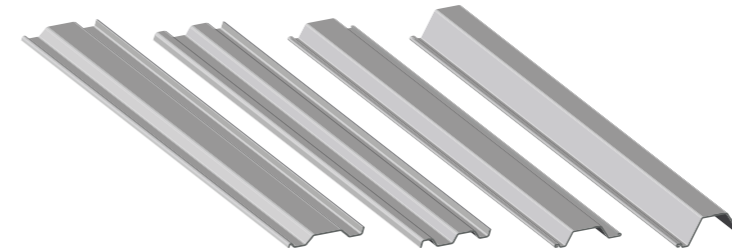
Type	Adjustment	Safe working load	Weight
<b>GIGANT</b> with hook-type angle from HEB 140 - 300 mm			
Gi-S 120	0,70 - 1,20 m	210,0 - 177,3 kN	26,00 kg
Gi-S 170	1,05 - 1,70 m	210,0 - 177,3 kN	32,00 kg
Gi-S 210	1,40 - 2,10 m	184,4 - 156,1 kN	36,00 kg
Gi-S 260	1,90 - 2,60 m	176,3 - 139,7 kN	40,00 kg
Gi-S 310	2,40 - 3,10 m	156,8 - 138,1 kN	45,00 kg
Gi-SV 210	1,40 - 2,10 m	548,0 - 290,0 kN	77,80 kg
Gi-SV 260	1,90 - 2,60 m	471,0 - 260,0 kN	89,00 kg
Gi-SV 310	2,40 - 3,10 m	424,0 - 270,0 kN	100,30 kg
Gi-SV 380	3,10 - 3,80 m	390,0 - 258,0 kN	116,00 kg
Gi-SV 450	3,80 - 4,50 m	344,0 - 262,0 kN	131,80 kg

Type	Adjustment	Safe working load	Weight
<b>TITAN</b> with support angle for 140/160 mm			
Titan 48/120	0,70 - 1,17 m	63 - 48 kN	8,58 kg
Titan 48/150	0,90 - 1,50 m	61 - 45 kN	10,25 kg
Titan 48/210	1,20 - 2,10 m	60 - 38 kN	12,90 kg
Titan 60/150	0,90 - 1,50 m	100 - 99 kN	16,20 kg
Titan 60/200	1,40 - 2,00 m	100 - 93 kN	19,40 kg
Titan 60/250	1,90 - 2,50 m	95 - 84 kN	22,10 kg
Titan 60/300	2,40 - 3,00 m	85 - 72 kN	25,00 kg

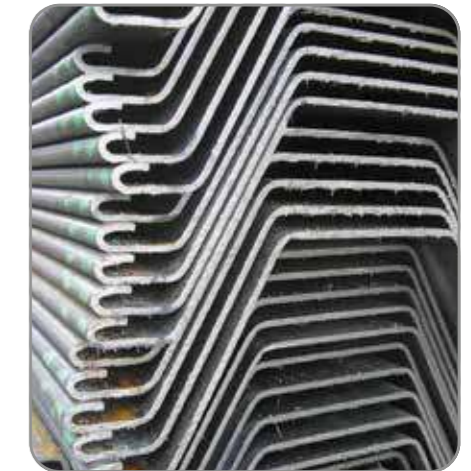
Type	Adjustment	Safe working load	Weight
<b>TERRA</b> with claw plate and nail hole			
Terra 1	0,50 - 0,80 m	38 - 30 kN	3,64 kg
Terra 1a	0,60 - 0,90 m	36 - 29 kN	3,92 kg
Terra 2	0,80 - 1,10 m	34 - 29 kN	4,51 kg
Terra 3	1,10 - 1,40 m	29 - 23 kN	5,37 kg
Terra 4	1,40 - 1,70 m	26 - 22 kN	6,36 kg



### Trench Sheets Sheet Piles



Type	Width (mm)	Section modulus (cm <sup>3</sup> /m)	Weight (kg/lfm)	Weight (kg/m <sup>2</sup> )
KD 400 / 6	400	98,75	22,23	55,57
KD 600 / 8	600	237	50,0	83,33
FLP 700 / 8	700	540	61,9	88,45
FLP 750 / 8	750	1044	76,61	102,0



Our product range covers **trench sheets** and **sheet piles** for all your needs in various sizes and shapes.





150

**REJNSTRUP**

GRAVEKASSER  
ENTREPRENØRMATERIEL

[www.regr.dk](http://www.regr.dk)

## Alu-stige

Aluminiums stige med rygbøjler til flugt og adgangsvej.

Stigen kan blive op til 9 m. længde med vanger af 80x40 mm og kan hægtes på vores afstivningssystemer.

Bredde 70 cm.  
Rygbøjler 80 cm.

Stigen er godkendt efter standarden EN 14122

Træt af tunge løft? - skift til alu-stige

**RING**  
Tlf: 71 96 92 30  
for mere information.  
[www.regr.dk](http://www.regr.dk)

Flugtvej  
Adgangsvej  
9 meter  
Letvægt





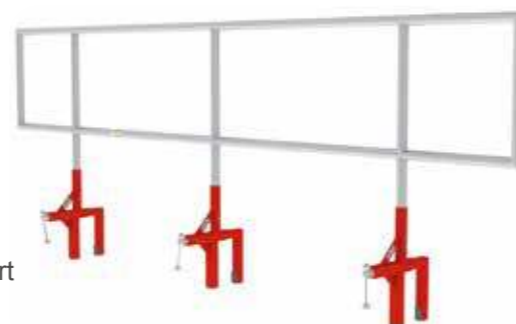
## ► SIKKERHEDSSYSTEMER



### SIKKERHEDSGELÆNDER

Justerbart aluminiums gelænder, til byggepladser med brug for fysiske barrikader, som forhindrer at arbejdere falder i åbne huller og udgravninger.

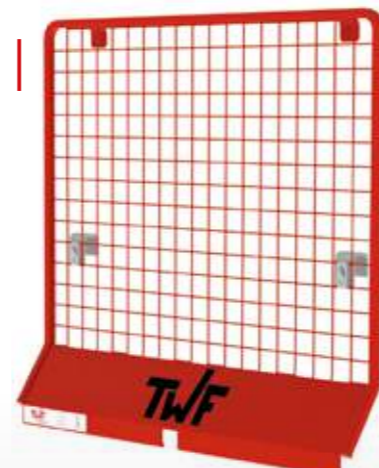
- med justerbar spændefod/ tvinge
- tilgængelig i længderne: 3,0 m, 3,5 m, 4,0 m
- modulær i design og konstruktion
- nem opbevaring. Stables på byggepladsen samt ved transport



### SIKKERHEDSGITTER Paneler 1000 mm

Gitter rækværk er et ideelt produkt til sikring af byggepladser. Praktisk løsning der formindsker risikoen for, at medarbejdere, der arbejder i åbne udgravninger, bliver ramt af faldende genstande.

- gitterpaneler: 1m x 1m
- lav vægt: 9 kg
- robust konstruktion
- hurtig at samle



### SIKKERHEDSPLATFORM Udskydelig

Den udskydelige platform og teleskopiske gangbro giver sikker adgang og udgang til og fra udgravningen, og lader altid brugere benytte tre sikkerhedskontaktpunkter.

- skridsikkert gittergulv
- låge der lukker automatisk
- indbygget stige-beslag



### SIKRINGSMAST Faldsikring

Sikring af personer på platformen. Sikringsmasten er designet til at passe ind på begge sider af den udskydelige platform.

Består af:

- sikringsmast
- friktionsrulle, 9 m



### REDNINGSKRAN Faldsikring

Redningskranen er designet til at blive monteret på afstivningspaneler/gravekasser (stål og aluminium).

Fungerer som faldsikring, og muliggør en sikker måde at få løftet arbejdere ud af svært tilgængelige huller/brønde og udgravninger.

- overbelastningsindikator
- justerbar rækkevidde
- effektiv rækkevidde: 24 m





## ► Mobile Road System

Our **Mobile Road System ground protection tiles** are available in three different categories. They are used to protect the ground by building **temporary access roads** or parking lots.

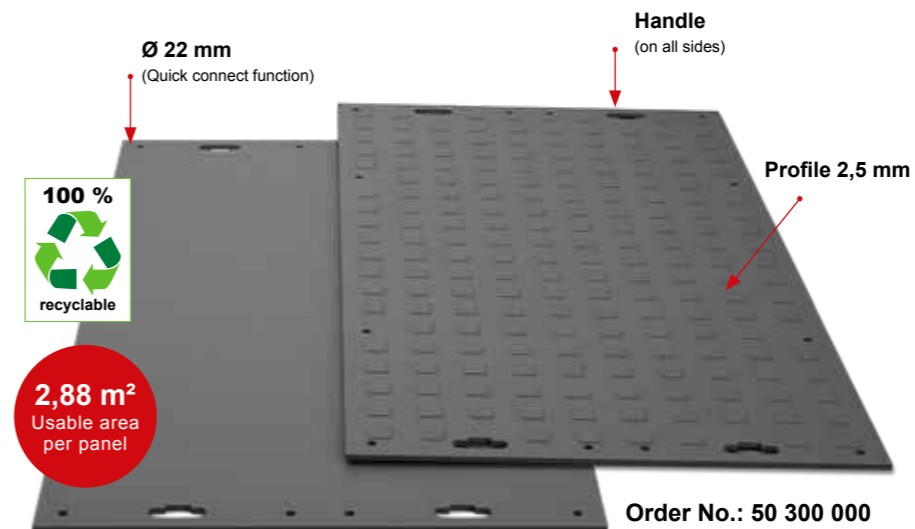
They serve to **protect or secure the subsoil** and, above all, prevent it from getting stuck in mud or snow and guarantee the **safe movement** of man and machine off-road.

Unightly ruts, plaster abrasion and other **damages of the ground are avoided thereby**. Furthermore, they offer a **high flexibility**, e.g. for the hassle-free crossing of obstacles or curbs or at music festivals and other **large outdoor events**.



## ► MRS - light

### MRS - Light



#### ► Properties

The **MRS - light** is extremely flexible and elastic, adapts perfectly the respective surface and protects sensitive surfaces.

**Material:** polyethylene, high molecular weight

**Dimensions:** 2400 x 1200 x 14,5 mm (including profile)

**Weight per panel:** approx 36 kg

**Surface / Colour:** 2,5 mm profile on one side / black-coloured

**Load capacity:** approx 60 t (depending on the ground conditions)

**Transport per truck:** 600 units (1728 m<sup>2</sup>)

- Road construction and access routes
- Concerts and events
- Temporary walkways
- Mobile logistics
- Mobile crane working spaces
- Mobile parking spaces
- Tent floors

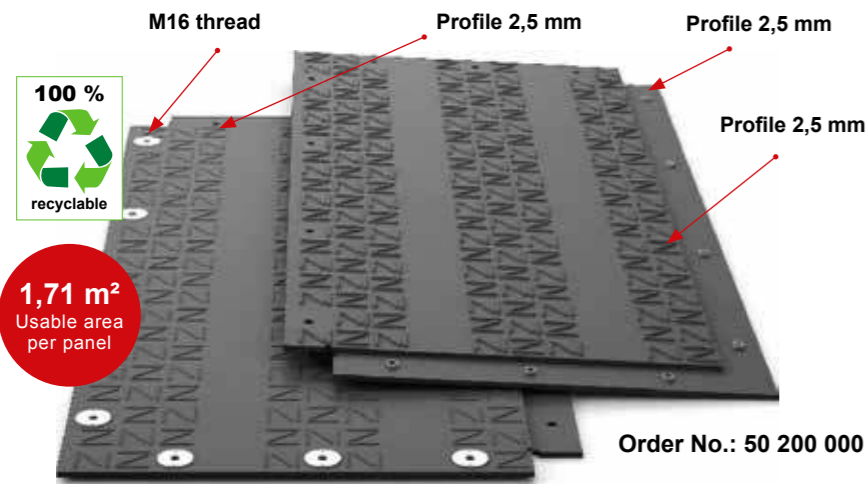
■ The plates can be used as a temporary **access road** or **parking lot** for tons of wheel load.





## ► MRS - medium

### MRS - Medium



#### ► Properties

The heavy-duty mat, which can be set up by hand, can withstand even the highest loads (130 tons). The newly designed profile with standardized ruts is suitable for driving over with a truck or wheelbarrow as well as for heavy-duty use of tracked vehicles and heavy construction machinery.

**Material:** polyethylene, high molecular weight

**Dimensions:** 2000 x 1000 x 31,5 mm (incl. Profil) **Overlap Edge:** 100 mm

**Weight pro Panel:** approx 40,5 kg

**Surface / Colour:** 5,0 & 2,5 mm profile / black-coloured

**Load capacity:** approx 130 t (depending on the ground conditions)

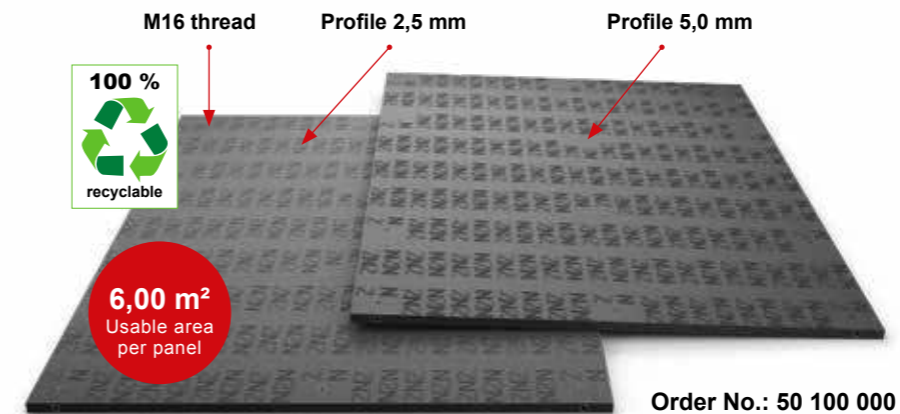
**Transport per truck:** 520 units (889 m²)

- Mobile crane working spaces
- Heavy load transports
- Mobile logistics
- Wind power construction
- Temporary walkways
- Road construction and access routes
- Transmission
- Concerts and events
- Mobile parking spaces
- Tent floors

■ Two people set up to 60 **MRS - medium** panels per hour without any additional aids.

## ► MRS - heavy

### MRS - Heavy



#### ► Properties

The **MRS - heavy** ground protection plates are screwed together, creating a permanently connected driveway or work platform for heavy loads in both length and width loads and vehicles are created. The load-bearing capacity of the subsurface is significantly optimized.

**Material:** polyethylene, high molecular weight

**Dimensions:** 3000 x 2000 x 45,5 mm (incl. Profil)

**Weight pro Panel:** approx 221 kg

**Surface / Colour:** 5,0 & 2,5 mm profile / black-coloured

**Load capacity:** approx 160 t

(depending on the ground conditions)

**Transport per truck:** 100 units (600 m²)

■ **Lower transportation costs with MRS - heavy** panels. They are easier to transport than most alternative road mats for temporary use.

- Mobile crane working spaces
- Heavy load transports
- Mobile logistics
- Wind power construction
- Temporary walkways
- Road construction and access routes
- Transmission
- Concerts and events
- Mobile parking spaces
- Tent floors





► **Supporting Equipment**

► **Proven Quality - Certificates**

**Hydraulic Pipe Puller**

- Safe and fast joining of reinforced concrete pipes
- No trailing cables due to battery operation
- Tensioning and pulling by push button control via hydraulic cylinders



For safe **lifting** and **lowering** or **contraction** of reinforced concrete pipes **pipe grabs** and **hydraulic pipe pullers** are a great help.

**Round Grab**

- The Strong **Combination** of **Grab** and **Sling** for the **Safe Handling** of Cylindrical Parts (Pipes, Cylinders ...)



For detailed information about **pipe grabs** and **hydraulic pipe pullers**, we are always at your disposal.



**CERTIFICATE**  
Factory production control  
**0035-CPR.1090-1.00875.TÜVRh.2015.002**

**Welding CERTIFICATE**  
**TÜVRh-EN1090-2.00806.2015.002**  
EN 1090-1, welding of steel and other metal constructions requires special expertise and manufacturer qualification – DIN EN 1090-2



**CERTIFICATE**  
DIN 4124  
DIN EN 13331





# REJNSTRUP

[www.regr.dk](http://www.regr.dk)

**SIKKERHEDEN ER I TOP!  
- NÅR DU ARBEJDER I BUNDEN**



Certifikater.  
Se side 39.

**Vores gravekasser er af meget høj kvalitet og testet efter høje tyske (TÜV) standarder.**

Vi lægger stor vægt på grundig rådgivning så du får en gravekasse der passer til dit udgravningsprojekt og som yder maksimal sikkerhed.

**Rådgivning og service**

**Vi er klar på telefon: 71 96 92 30**

**Email: [rg@regr.dk](mailto:rg@regr.dk)**

**KASSEN TIL ENTREPRENØREN**